

## Facilities for people touring the markets

### ▶ Toyosu Market PR section

(Toyosu Market administration building, 3F)

Display panels provide information about Toyosu Market's structure and history as well as its special features.

Note: General tour routes can also include tours of facilities at Toyosu Market.



### ▶ Shokuniku (Meat) Market Meat Information Hall

(Shokuniku Market central building, 6F)

Exhibits are set up to provide information about the meat market and its operations and roles, including meat production and distribution, as well as to eliminate discrimination related to the meat market and the slaughterhouse.



### ▶ Ota Market Exhibition Hall

(Ota Market office building, 2F)

Display panels provide information about the special features of Ota Market and how wholesale markets work. There are turret trucks on display, and visitors can also watch videos about the market in the audiovisual room.

Note: General tour routes can also include tours of facilities at Ota Market.



Please check our website or contact individual markets for details on the dates and times that individual facility tours are possible or about tours of other markets (including group tours for schools).



Detailed information about market tours is available here:



### Icchino is a big fan of the market!



### About Tokyo Metropolitan Central Wholesale Market mascots

Born and brought up at the market, the sprite Icchino is devoted to the market in mind and body. He and his wife Yasachino and child Kochino describe the market in detail, in a way that is easy to follow.

## 東京都中央卸売市場

2-8-1, Nishi-Shinjuku, Shinjuku-ku, Tokyo

Tel: +81-3-5320-5720

<https://www.shijou.metro.tokyo.lg.jp>

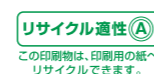
Tokyo Metropolitan Central Wholesale Market Search



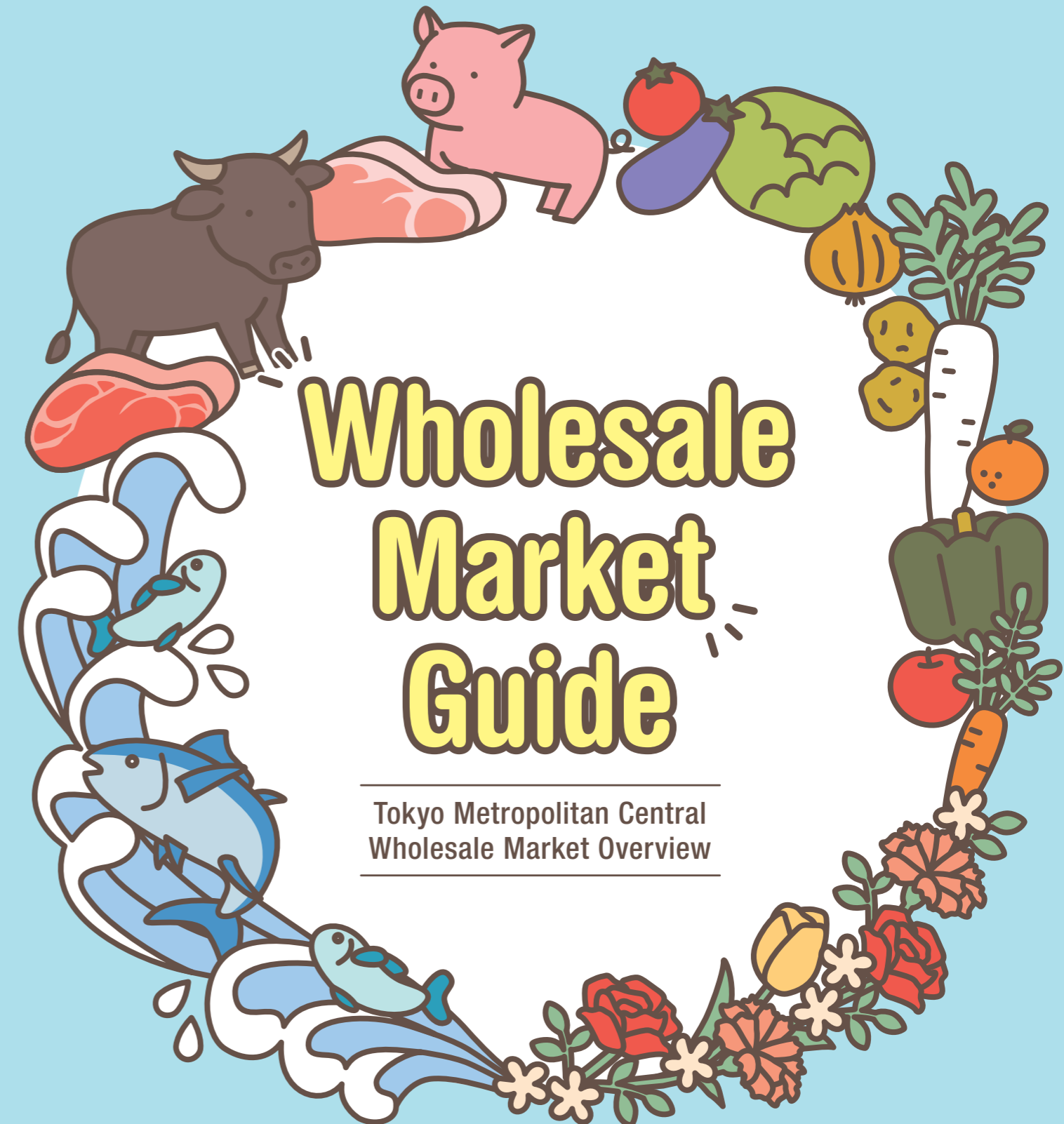
Official Tokyo Metropolitan Central Wholesale Market Twitter account  
@tocho\_shijou



Printed material reg. no: 2020, no. 16 (produced in March 2021).



古紙配合率60%再生紙を使用しています



Tokyo Metropolitan Central Wholesale Market Overview

# Market Overview

The Tokyo Metropolitan Central Wholesale Market is a base of distribution network that smoothly and securely supplies fresh food products and other items indispensable to everyday life, including fishery products, fruits, vegetables, meat and flowers.

The eleven central wholesale markets in the Tokyo Metropolitan area gather large amounts of diverse types of products from Japan and elsewhere, meeting the dietary needs and affluent lifestyles of Tokyo residents and other consumers through fair and fast transactions.



# History of the Central Wholesale Market Network



Detailed information about the wholesale market network's history is available here:



Along with sustaining food culture from Edo to Tokyo, the Tokyo Metropolitan Central Wholesale Market carries out market development to provide Tokyo area residents an affluent lifestyle.

## The beginning of wholesale markets

The riverside fish market along the approach to Nihonbashi Bridge where fishermen sold their leftover fish after supplying the Edo shogunate is considered the origin of Tokyo's fish market. Fresh produce markets also started up spontaneously at around the same time, and are said to have developed around today's Kanda-Sudacho district.



Mid-Edo Era fish market



Meiji Era Kanda produce market (fruit and vegetable market)  
Source: National Diet Library website

## Wholesale markets in the Meiji (1868-1912) and Taisho (1912-26) Eras

Privately operated markets licensed by what was then Tokyo Prefecture were established from around the time of the Meiji Restoration, but plans to build a market in Tokyo City, at the time, progressed rapidly after the significant damage from the Kanto earthquake in 1923.

## Showa Era (1926-89) wholesale market

The three markets of Kanda, Koto, and Tsukiji opened in 1935, followed by Toshima, Yodobashi, Adachi and Shokuniku (Meat). The Itabashi, Setagaya, Kita-Adachi, Tama New Town, and Kasai markets were subsequently set up to accommodate the increasing population of Tokyo.



Tsukiji market in 1964

## Today's wholesale markets



Toyosu Market, established in 2018

The first flower market section was opened in 1988 at Kita-Adachi Market, and others opened later in four markets. The eleventh, Ota Market, was set up in 1989. The most recent wholesale market, Toyosu Market, debuted as the metropolitan area's new core market in 2018.

# A Day at a Wholesale Market: The Flow of Business

Here we take a look at how a day goes by at a wholesale market, which plays a central role in the distribution of fresh food and other products.



From the evening of the previous day until around 4 a.m.

## Product deliveries

Products transported to the market from around Japan and overseas are arranged by type in the wholesale market.



From 4 to 7 a.m.

## Preparing for business (inspections)

Intermediate wholesalers and authorized buyers who participate in auctions prepare by inspecting the items they want to buy, estimating prices by checking quality and the details of items.



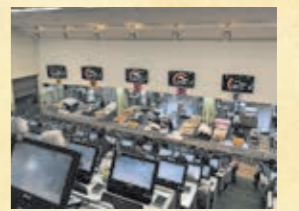
From 4:30 to around 9 a.m.

## Business in the market

Auctions begin. Intermediate wholesalers and authorized buyers display prices in response to wholesaler auctioneers' bid calls, and products are sold to the people that offered the top bids.



Auctions employing hand signal bids for seafood, fruits and vegetables



Automated auctions for flowers and meat

Along with auction transactions, a wholesaler and an intermediate wholesaler/authorized buyer also engage in negotiated transactions in which they directly negotiate prices and amounts one-on-one.



From 7 to around 11 a.m.

## Sales to buyers

Products are transported to shops within the market for sale in affordable sizes and amounts to buyers representing community retailers.



Around 11 a.m.

## Cleanup and preparation for the following day

The wholesale market and shops are cleaned up, and people prepare for the next day's business.



Detailed information about the flow of business is available here:

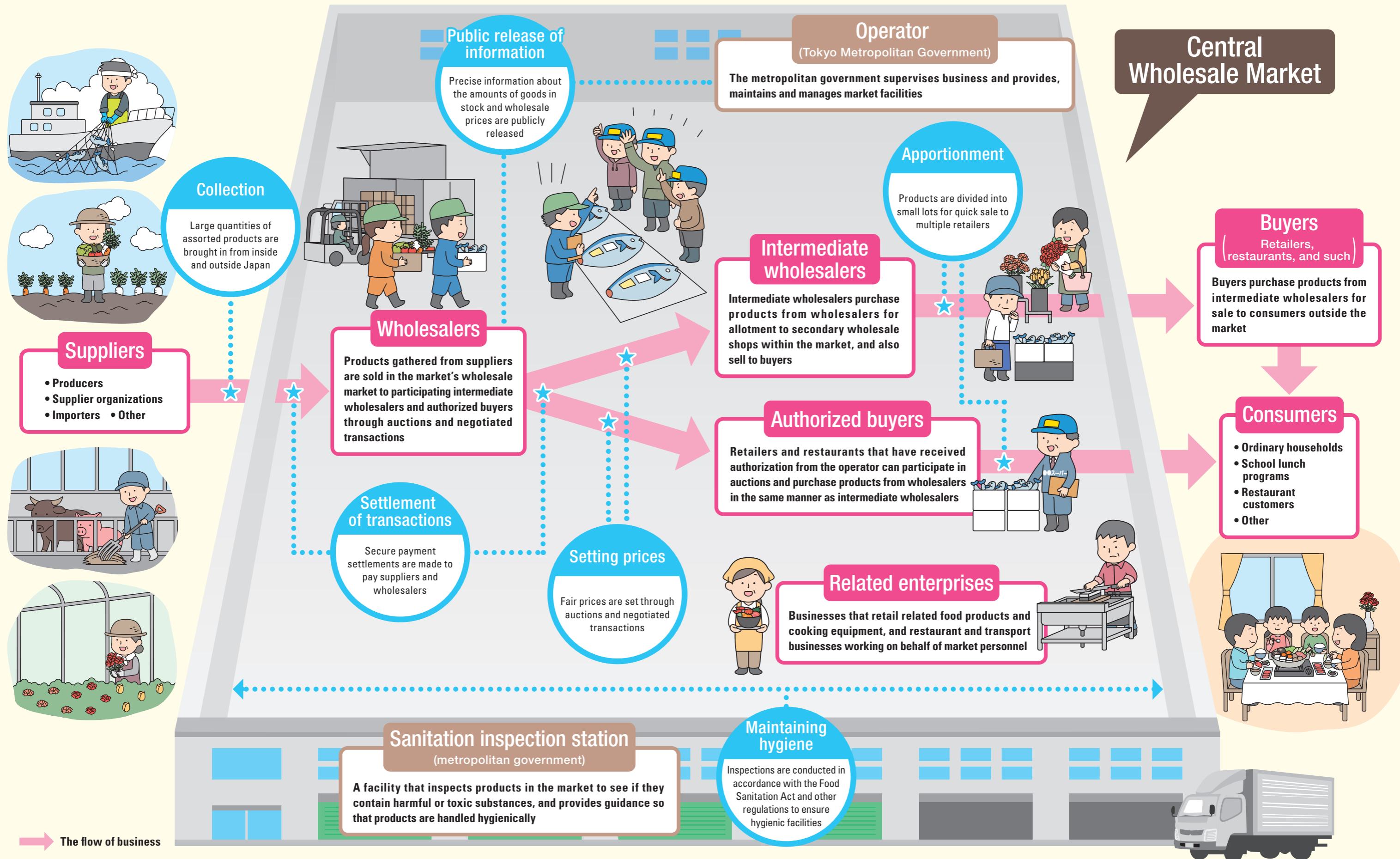


# How the Market Works: The People Who Work There

The market's many functions, and the key roles of the people working there.



Detailed information about the market's functions is available here:



# Information about Individual Markets

Tokyo's eleven central wholesale markets supplement each other and form a distribution network.



Detailed information about each market is available here:



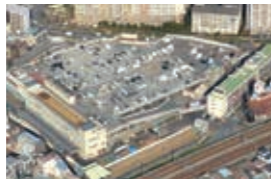
-  **Fishery products** (3 markets)
-  **Fruits and vegetables** (9 markets)
-  **Meat** (1 market)
-  **Flowers** (5 markets)

## Legend

Market name	Products handled
1 Address	2 Phone number
3 Site area	4 Date operations commenced

## 5 Yodobashi Market

- 1 4-2-1 Kita-Shinjuku, Shinjuku-ku
- 2 +81-3-3363-1428
- 3 23,583m<sup>2</sup>
- 4 February 16, 1939



## 4 Toshima Market

- 1 5-1-5 Sugamo, Toshima-ku
- 2 +81-3-3918-0301
- 3 23,334m<sup>2</sup>
- 4 March 25, 1937



## 6 Adachi Market

- 1 50 Senjuhashidocho, Adachi-ku
- 2 +81-3-3882-4301
- 3 42,675m<sup>2</sup>
- 4 February 11, 1945



## 1 Toyosu Market

- 1 6-6-1 Toyosu, Koto-ku
- 2 +81-3-3520-8205
- 3 354,953m<sup>2</sup>
- 4 October 11, 2018



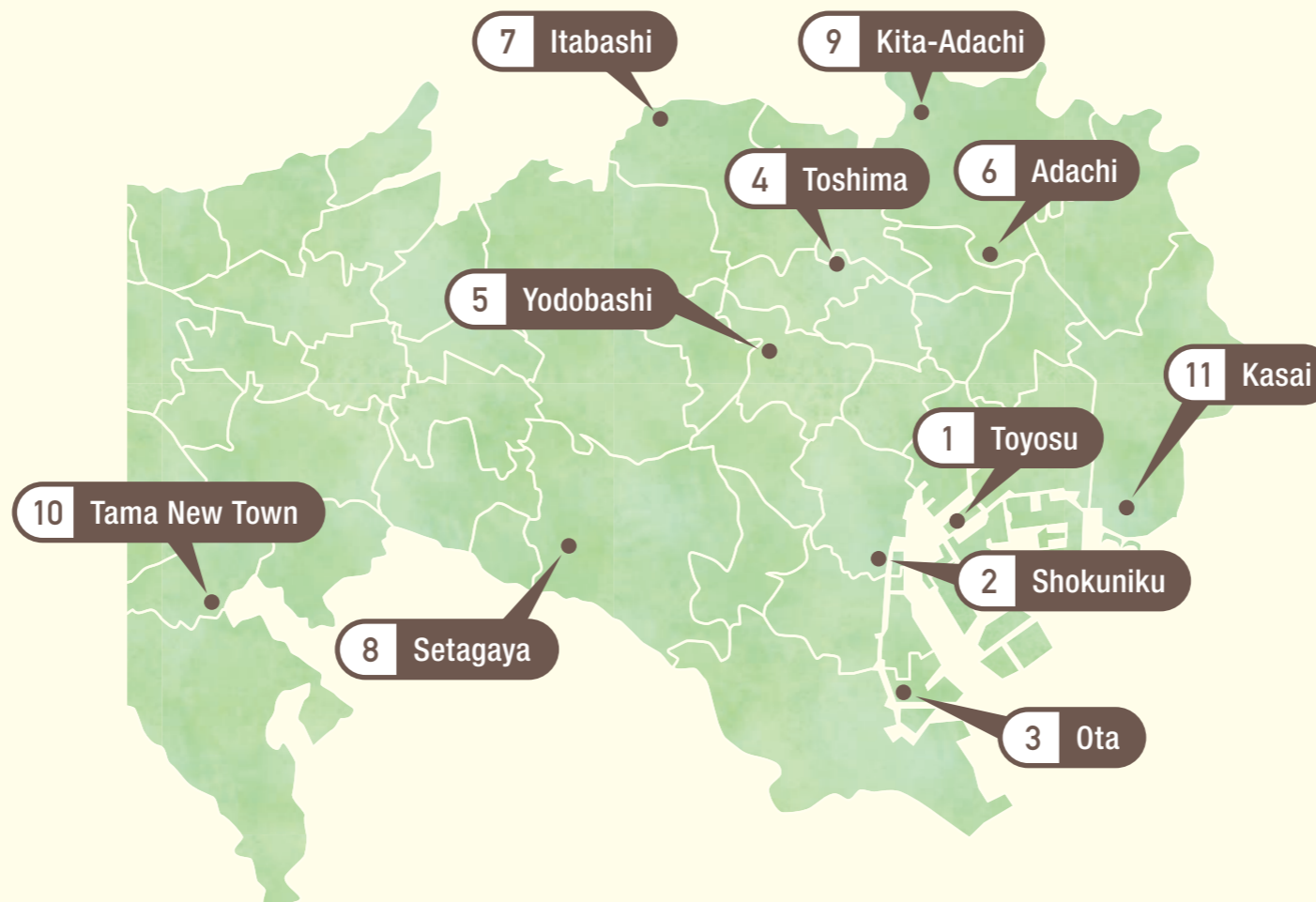
## 10 Tama New Town Market

- 1 7-4 Nagayama, Tama-shi
- 2 +81-42-375-9211
- 3 57,153m<sup>2</sup>
- 4 May 26, 1983



## 8 Setagaya Market

- 1 1-4-1 Okura, Setagaya-ku
- 2 +81-3-3417-0131
- 3 41,482m<sup>2</sup>
- 4 Fruits and vegetables: March 27, 1972  
Flowers: April 14, 2001



## 9 Kita-Adachi Market

- 1 6-3-1 Iriya, Adachi-ku
- 2 +81-3-3857-7181
- 3 61,076m<sup>2</sup>
- 4 Fruits and vegetables: September 17, 1979  
Flowers: April 25, 1988



## 7 Itabashi Market

- 1 6-1-5 Takashimadaira, Itabashi-ku
- 2 +81-3-3938-0171
- 3 61,232m<sup>2</sup>
- 4 Fruits and vegetables: February 28, 1972  
Flowers: February 24, 1993



## 11 Kasai Market

- 1 3-4-1 Rinkaicho, Edogawa-ku
- 2 +81-3-3878-2000
- 3 74,515m<sup>2</sup>
- 4 Fruits and vegetables: May 7, 1984  
Flowers: April 14, 1995



## 2 Shokuniku (Meat) Market

- 1 2-7-19 Konan, Minato-ku
- 2 +81-3-5479-0651
- 3 64,108m<sup>2</sup>
- 4 December 19, 1966



## 3 Ota Market

- 1 3-2-1 Tokai, Ota-ku
- 2 +81-3-3790-8301
- 3 386,426m<sup>2</sup>
- 4 Fruits and vegetables: May 6, 1989  
Fishery products: September 18, 1989  
Flowers: September 8, 1990

